



ELECTRICAL PERMIT REQUIREMENTS

Iowa Statewide Electrical Permits and Inspections start on March 1, 2009

NEW CONSTRUCTION:

Electrical permits will be required for all new electrical installations including residential, commercial, and industrial in all areas of the state that are not currently under the jurisdiction of a political subdivision which performs electrical inspections.

EXISTING CONSTRUCTION:

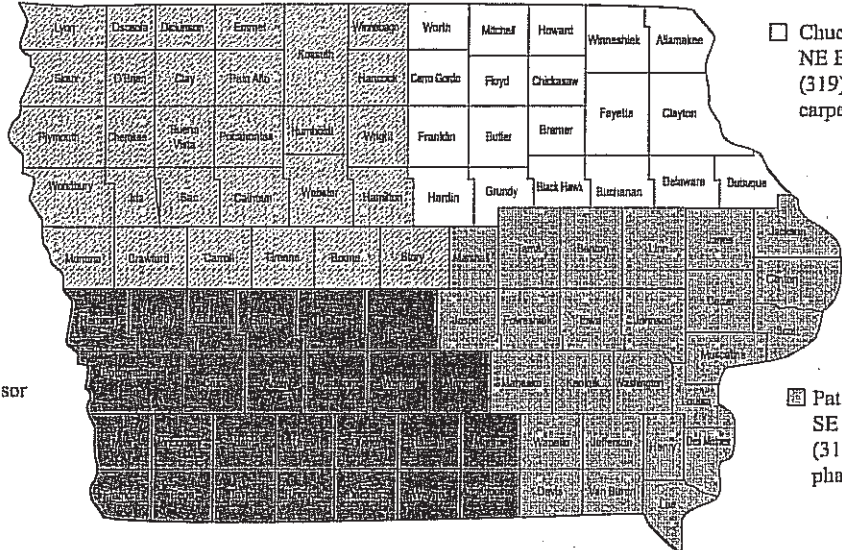
Electrical permits will be required for all new installations and alterations unless all of the following conditions apply: (1) The installation is under the direct supervision of a licensed electrician. (2) The installation does not in anyway involve work within a new or existing switchboard or panelboard. (3) The line to ground installation does not exceed 30 amperes. (4) The line to ground installation does not exceed 277 volts single phase.

ROUTINE MAINTENANCE:

Electrical permits will not be required for routine maintenance. *Routine Maintenance* has been defined as “the repair or replacement of existing electrical apparatus or equipment of the same size and type for which no changes in wiring are made”.

For more information, contact the State Electrical Inspector Supervisor in your area as indicated below. For electrical license information, access our web site: iowaelectrical.gov or call 1-866-923-1082.

Dwight Kramer
NW Electrical Inspector Supervisor
(515) 290-0629
kramer@dps.state.ia.us



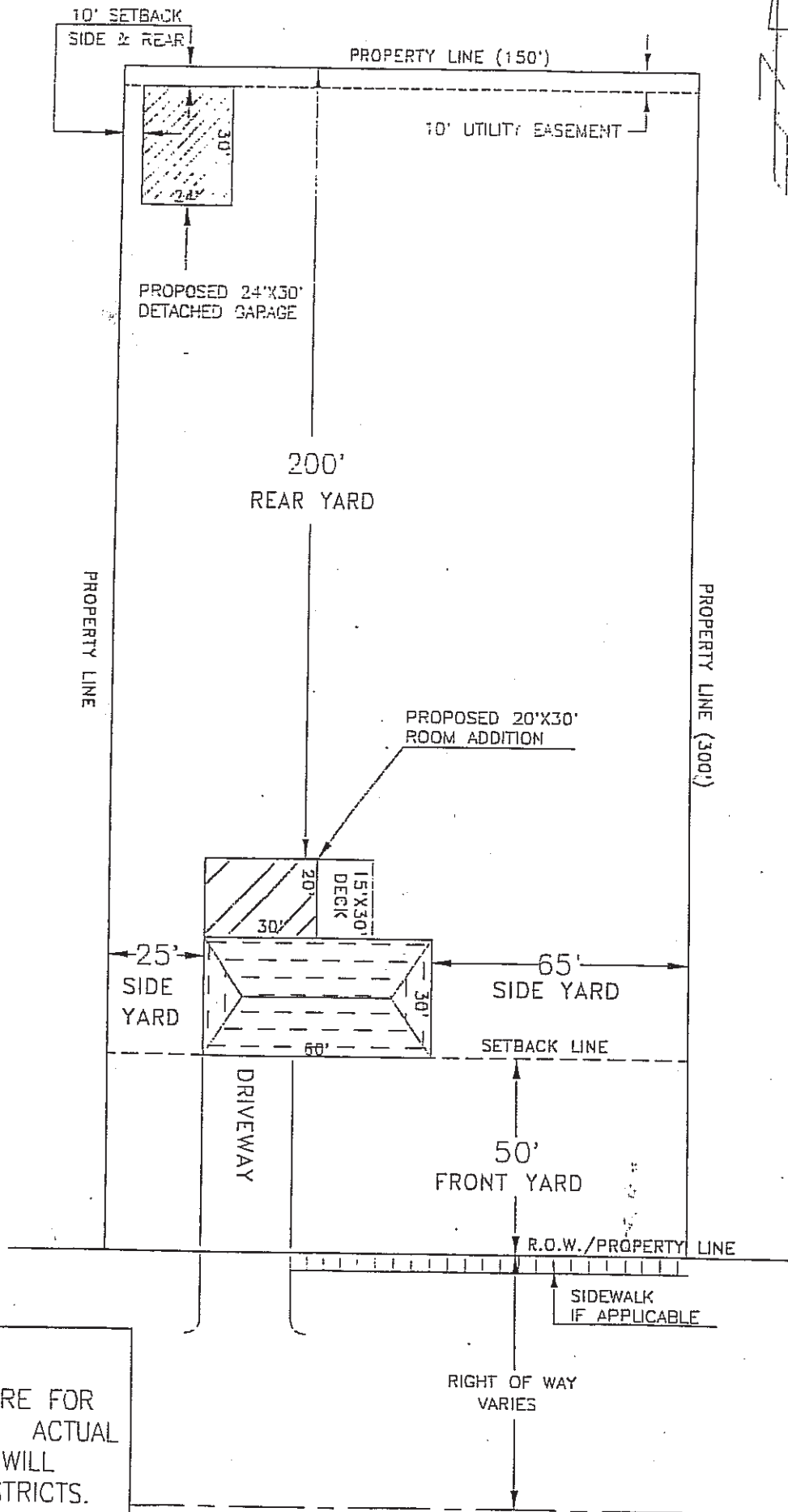
Chuck Carpenter
NE Electrical Inspector Supervisor
(319) 415-4952
carpente@dps.state.ia.us

Brian Young
SW Electrical Inspector Supervisor
(515) 971-5893
byoung@dps.state.ia.us

Pat Hansen
SE Electrical Inspector Supervisor
(319) 430-4916
phansen@dps.state.ia.us

Patrick Merrick - Chief Electrical Inspector ~ (515) 725-6147 ~ merrick@dps.state.ia.us

ZONING PERMIT DIAGRAM EXAMPLE SUBMITTAL DRAWING



NOTE
DISTANCES SHOWN ARE FOR THIS EXAMPLE ONLY. ACTUAL MINIMUM DISTANCES WILL VARY BY ZONING DISTRICTS.